



**IGOR GRECHANYK**

Resume

# Igor Grechanyk

Igor Grechanyk's sculpture begins with the human experience of encountering the larger dimensions of existence — time, memory, myth, and the invisible structures that shape our lives. His sculptural language is rooted in the conviction that form can reveal hidden aspects of history and human experience, as well as the archetypal patterns that connect cultures across time.

The human presence in Grechanyk's sculpture becomes the language through which these encounters take form. Through it, moments arise in which consciousness opens, memory becomes present, time becomes tangible, and the invisible enters human experience.

Working primarily in bronze and metal, Grechanyk develops forms that balance monumentality and openness. His mature sculptures increasingly evolve into spatial and architectural structures, where matter becomes permeable to light, space, and movement. Architecture here becomes a way of thinking about consciousness — as a living structure continuously shaped through its relationship with the world.

Across different periods of his practice — from mythological and figurative works to increasingly open spatial constructions — his central inquiry has remained remarkably consistent. His sculptures explore the human possibility of entering into dialogue with the larger realities of existence. This profound trust in human nature gives his work its distinctive inner light, remaining present even when the sculptures speak of history, loss, or tragedy.

"Art makes visible what exists before form."

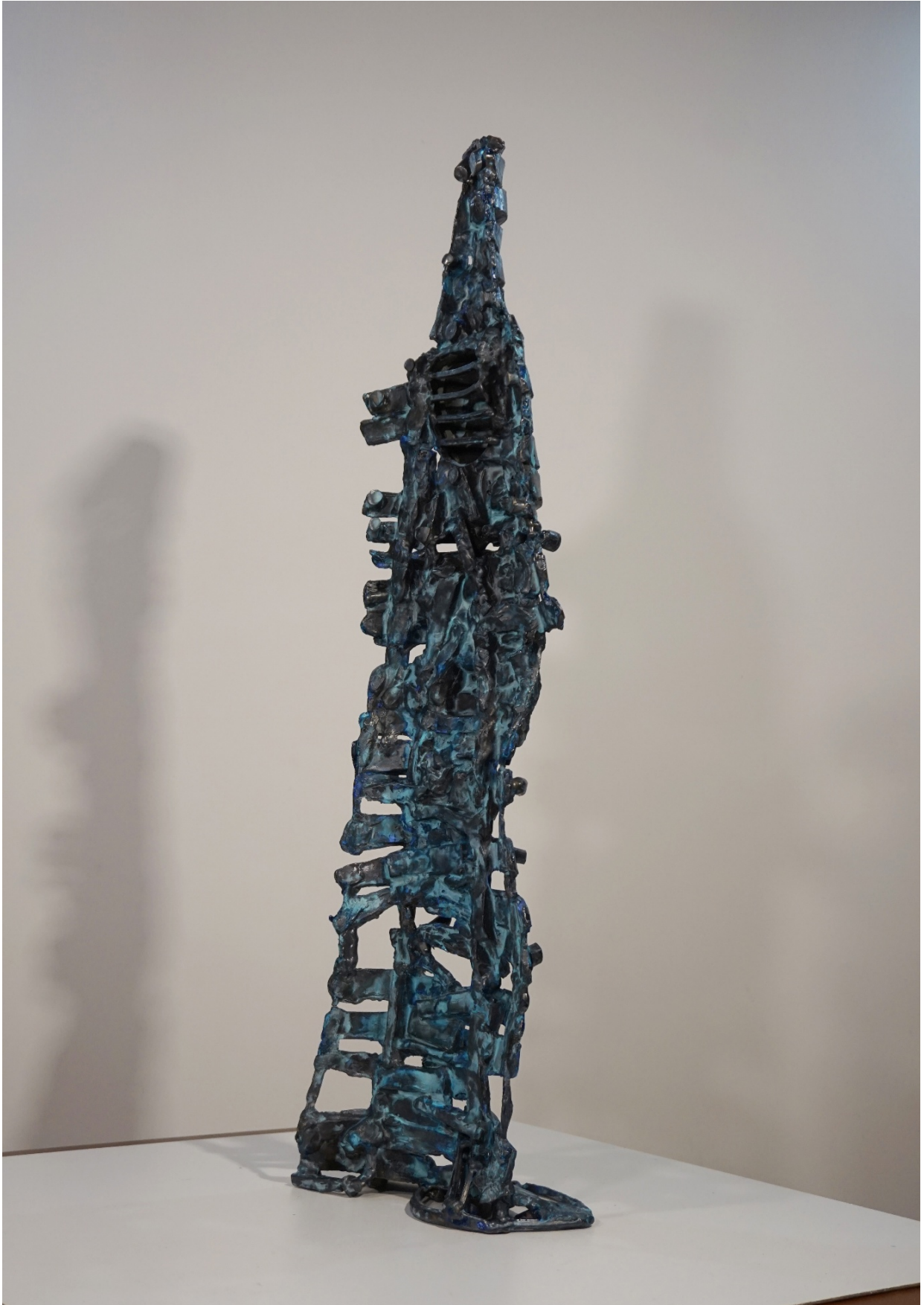
— Igor Grechanyk



**Sail (Front view)**

Bronze, 76x16x12cm

The sculpture expresses the idea of a person open to the impulses of the universe. As a sail responds to the slightest breath of wind, so a human being remains receptive to subtle forces and invisible movement, awakening an inner readiness to move forward.



**Sail (Side view)**  
Bronze, 76x16x12cm



**Architecture of Memories (Front view)**  
66x27x24cm Bronze

The sculpture reflects on memory as a living structure that gradually shapes human presence. Layer by layer, experience becomes embedded within us, forming an inner architecture where time, remembrance, and identity continuously reshape one another.



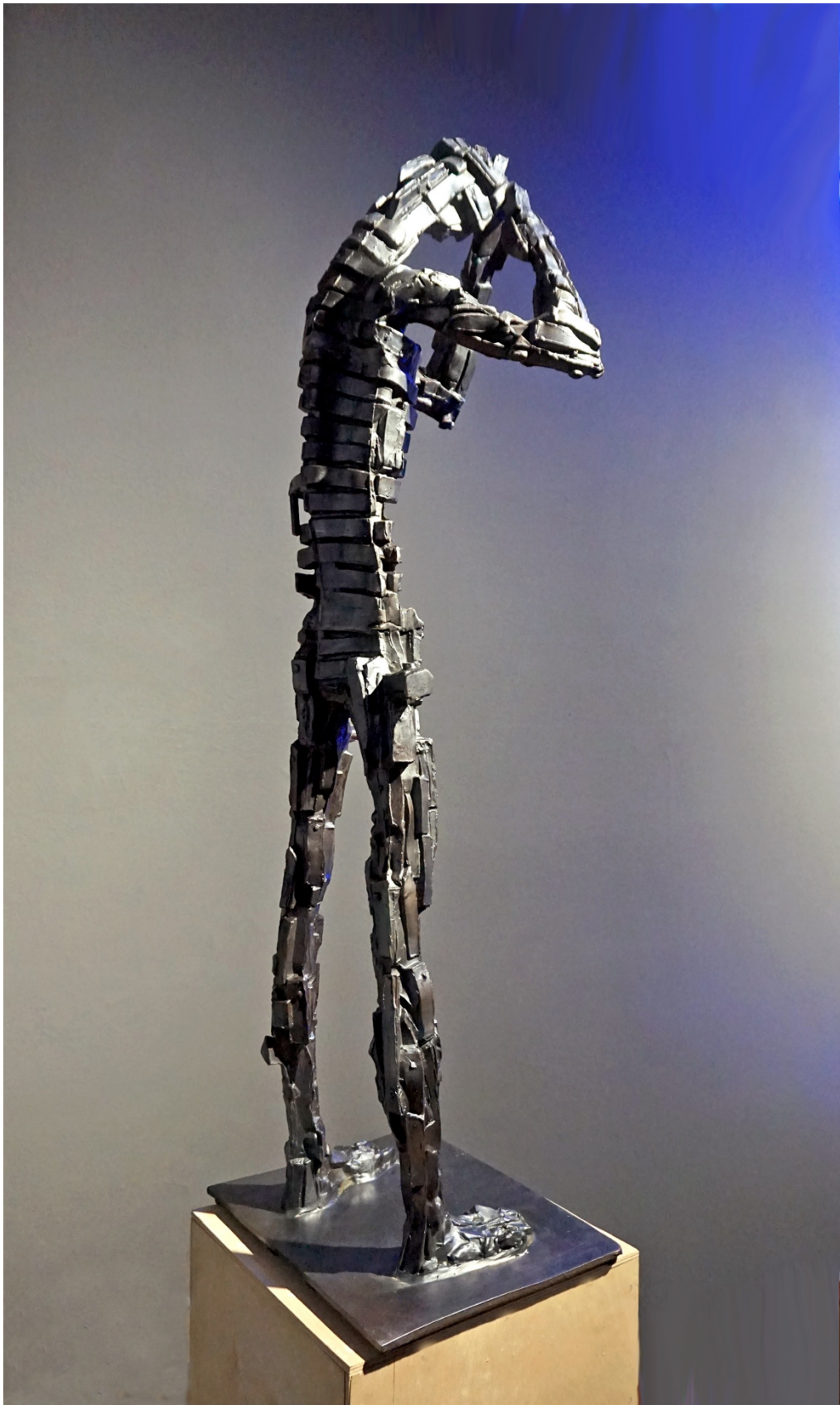
**Architecture of Memories (Side views)**  
66x27x24cm Bronze



**Beyond the Horizon of Consciousness (Front view)**

104x30x33cm - Bronze

The sculpture reflects the human capacity to rebuild oneself in response to a changing world. Its fragmented form suggests a continual process of inner transformation, as identity and consciousness are repeatedly reassembled in search of a broader horizon. The raised hands meet above the head to form a pyramid-like gesture, suggesting an inward concentration and an openness to a reality beyond the visible.



**Beyond the Horizon of Consciousness (Side view)**

104x30x33cm - Bronze



**Book of Numbers. Emergence (Front view)**

66x27x24cm Bronze

The sculpture's vertical lines, resembling the ends of tightly packed pages, metaphorically represent the "Book of Numbers" – a book of spiritual guidance for humanity, collective wisdom, or genetic code. It contains records of trials, defeats, and victories. The breakthrough of these lines through the outer shell symbolizes the unveiling and realization of these profound truths – one's own essence, history, or code.

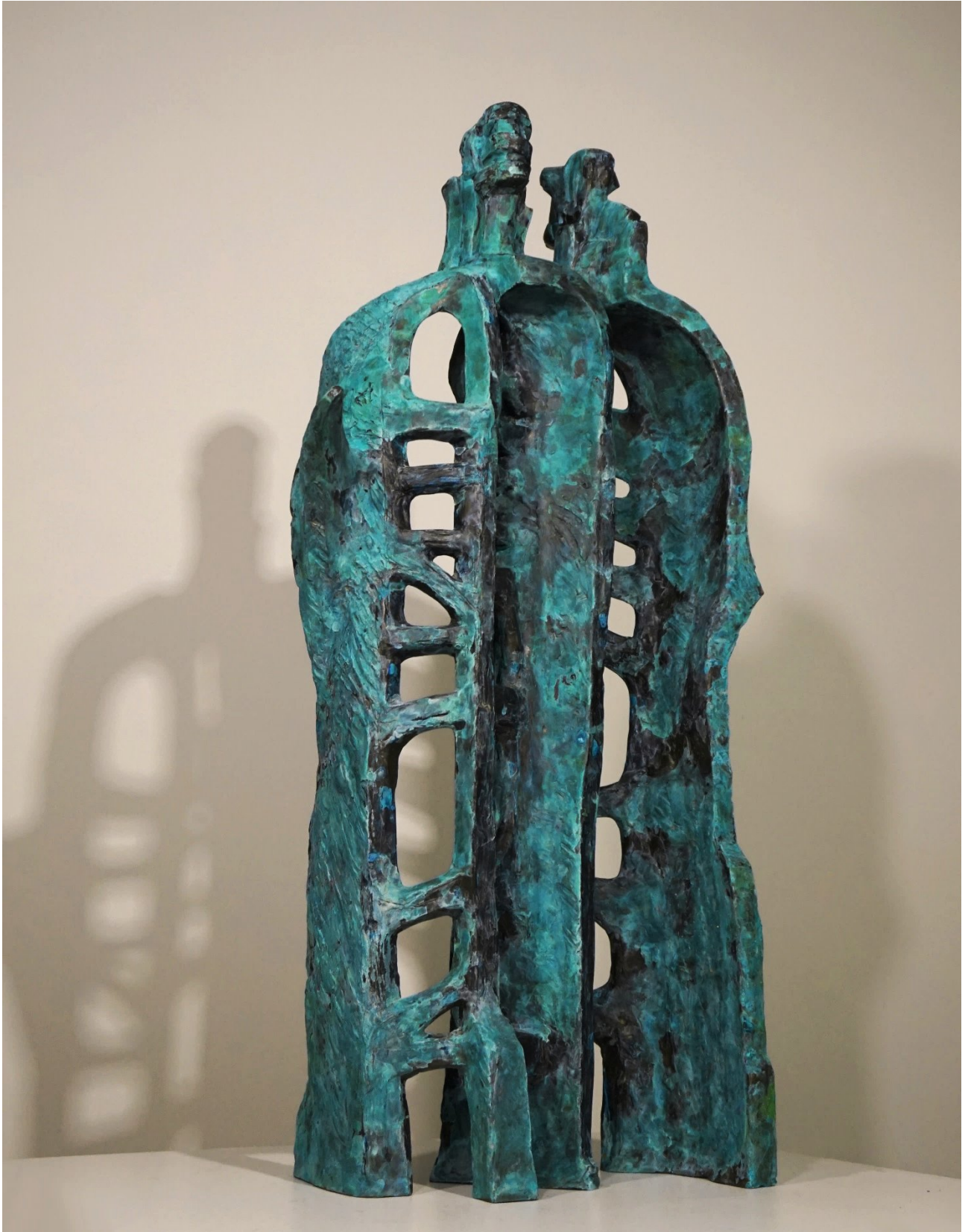


**Book of Numbers. Emergence (Side view)**

66x27x24cm Bronze

This sculptural visualization is like “reading” a book through direct experience, rather than simply turning pages.

The inner strength and essence, manifested through the vertical lines, reflect a constant, “embedded” guide or truth. It is not an external directive, but something that emerges from the deepest layers of being.



**Other Side (Front view)**

78x40x20cm

Bronze

A sculptural exploration of hidden connections and inner correspondences that become visible through form. The work reveals relationships that are not immediately apparent, inviting the viewer to perceive what lies beneath the surface of reality.



**Other Side (Side view)**

78x40x20cm

Bronze

Its structure unfolds gradually in space, allowing different layers of meaning to emerge depending on the viewer's position.



**Terra Incognita**

102 × 45 × 45 cm

Bronze, iron

Terra Incognita reflects on the human encounter with the unknown. Emerging from rigid architectural structures, the figure reaches toward a space beyond certainty, transforming physical movement into a metaphysical passage.



**Cyclical nature of metaphysical transformation (View 1)**

(Metaphysics of Beauty)

Bronze, 117x30x25 cm

In this work we see the manifestation of the primary metaphysical creative principle of the universe, the impulse of creation from the depths of the universe. This is the materialized music of creativity, the music of the universe itself, the rhythm of which is created by the cosmic cycles of creation. At the heart of it is the perfect feminine.



**Cyclical nature of metaphysical transformation (View 2)**

(Metaphysics of Beauty)

Bronze, 117x30x25 cm

In the collection of the Kyiv National Art Gallery



**Cyclical nature of metaphysical transformation (View 3)**

(Metaphysics of Beauty)

Bronze, 117x30x25 cm

In the collection of the Kyiv National Art Gallery



### **Synchronicity (View 1)**

Bronze, 23x17x32cm

"Synchronicity" captures a rare moment of alignment with the universal flow. It is a visual meditation on resonance—when our inner landscape, understanding, and actions harmonize with the subtle vibrations of existence. In this state, obstacles dissolve, revealing deeper truths and unexpected, meaningful connections.

The sculpture's open form and the inner channel between the heads create a space through which the continuity and profound interdependence of all phenomena become perceptible. The work opens onto a condition beyond causality—everything is held within a single field, where separate elements align without merging, maintaining both distinction and unity.



**Synchronicity (View 2)**

Bronze, 23x17x32cm



**Tectonics of Time (View 1)**

Bronze, 78x24x20 cm

We pass through time, and time passes through us. In this process, transformation takes place. Time, as an invisible force, breaks old connections and creates new ones. It generates an inner tension between the memory of who we have been and who we are becoming as we move through time along the path of our lives.



**Tectonics of Time (View 2)**  
Bronze, 78x24x20 cm



**Tectonics of Time (View 3)**  
Bronze, 78x24x20 cm



### **The Wall (View 1)**

Bronze, \_67x21x22cm

The Wall is not an absolute barrier, but a permeable threshold. It is a space where different visions and perspectives encounter one another, allowing for a profound interpenetration and mutual enrichment. Through its openness, the Wall becomes a site of cultural dialogue and transformation.



**The Wall (View 2)**

Bronze, \_67x21x22cm



**Tangency (View 1)**

Iron, bronze

217 × 53 × 53 cm

A vertical, open-form figure exploring the point of contact between inner and outer space. The human presence is reduced to its essential structure, held within a linear framework that suggests both limitation and containment.

A bronze hand emerging from the structure becomes a focal point of connection — a gesture reaching beyond boundaries toward openness and expression. The contrast between the rigid framework and the living gesture creates a dynamic tension between form and essence, material and spirit.

Its transparency allows light and the surrounding space to pass through the sculpture, making it responsive to its environment and creating an open, contemplative presence.



**Tangency (View 2)**

Iron, bronze

217 × 53 × 53 cm



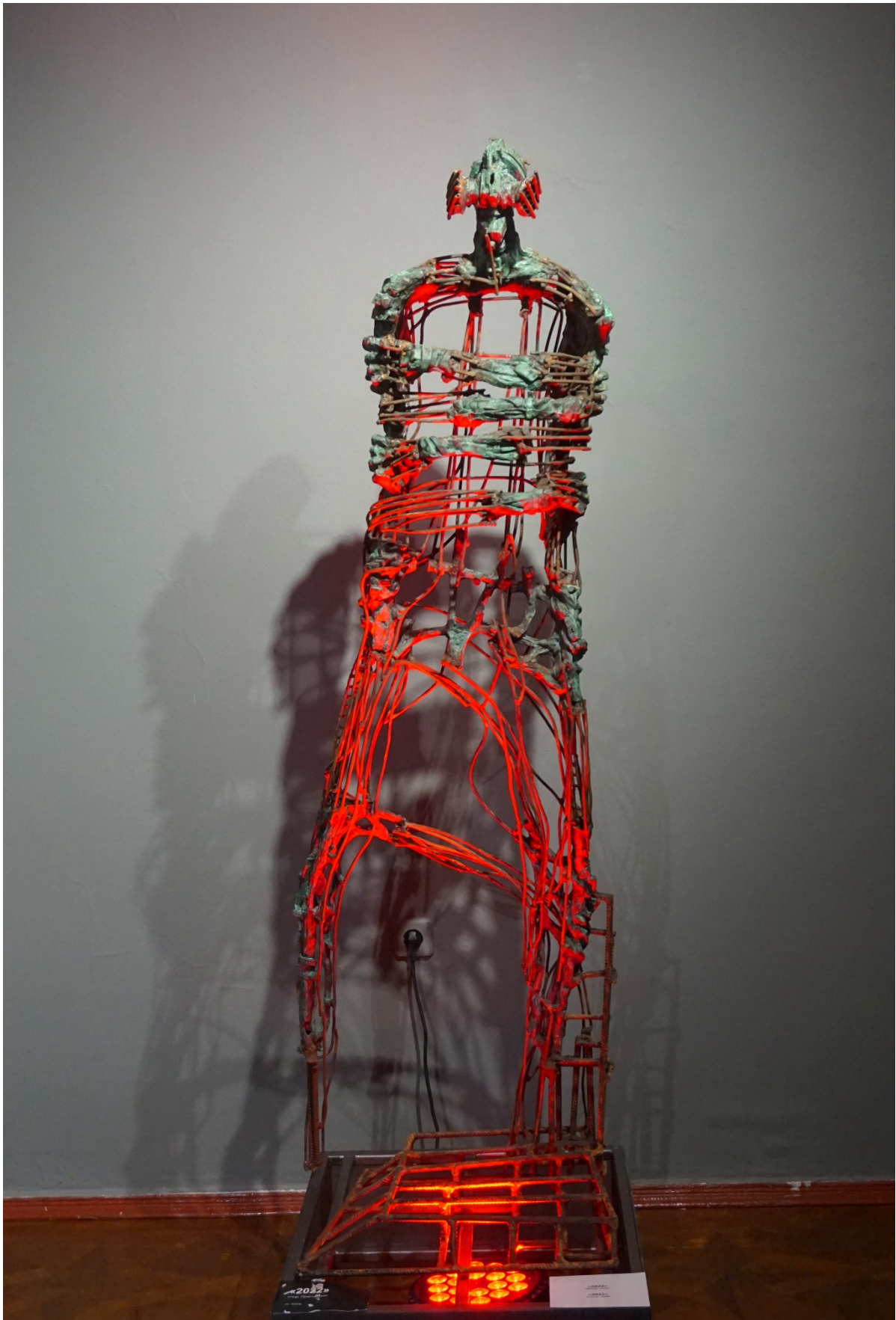
**Titus Livius XXI (View 1)**

Bronze, iron, 182x33x33 cm

Titus Livius XXI — a witness to contemporary history, carrying within himself both the observer and the one who endures the events he records.



**Titus Livius XXI (View 2)**  
Bronze, iron, 182x33x33 cm



**2022 (View 1 with red lighting)**

Bronze, iron, 172x54x42 cm

2022 embodies, with remarkable clarity, a state of holding oneself together. Created in the first year of the full-scale war in Ukraine, the work balances between form and disintegration, yet the figure sustains itself despite everything. Human presence emerges as a structure of tension, held together at the edge of rupture.



2022 (View 2)  
Bronze, iron, 172x54x42 cm



**2022 (View 3)**  
Bronze, iron, 172x54x42 cm



**Untitled (View 1)**

Bronze, iron, 200x80x45 cm

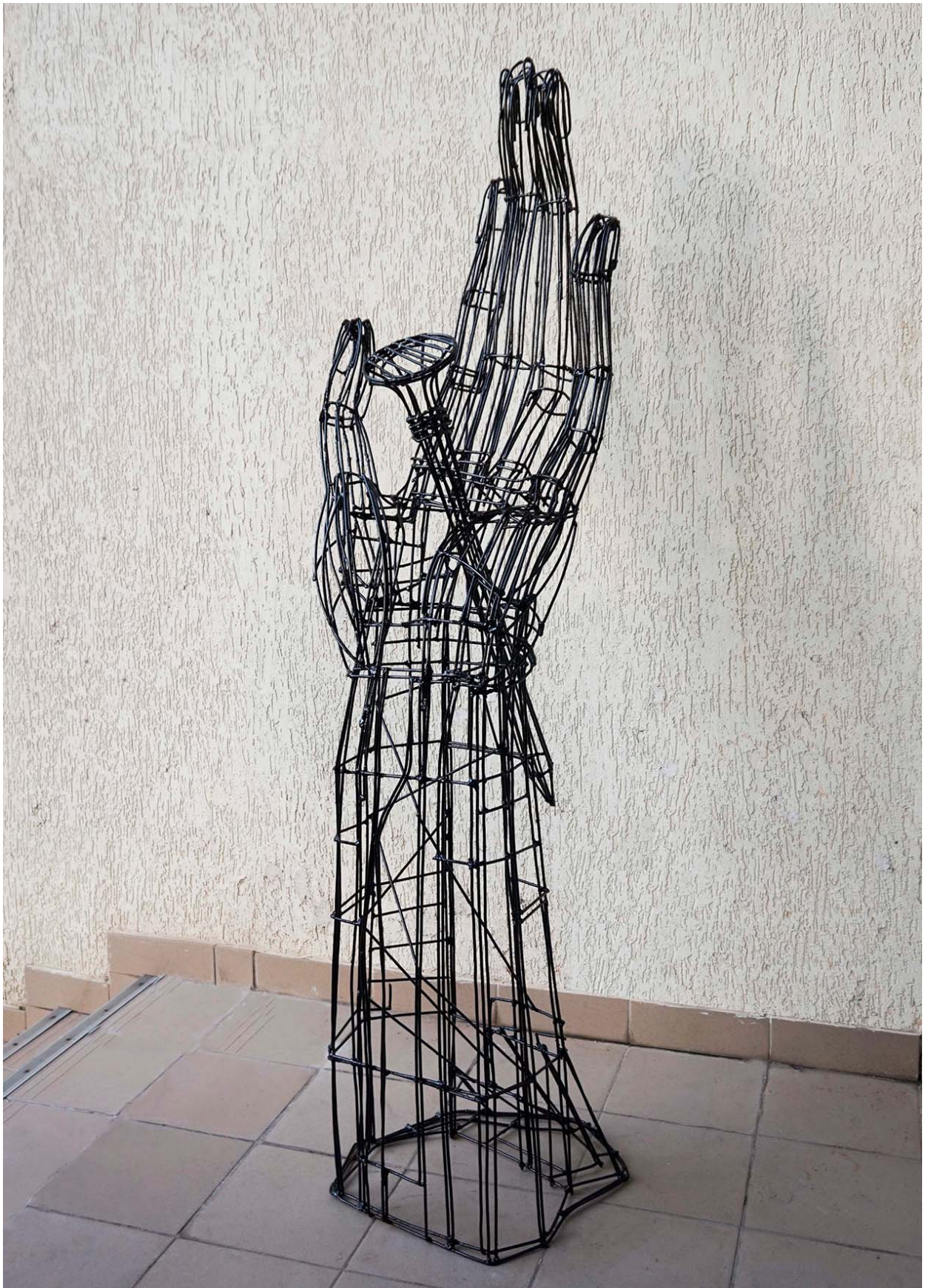


**Untitled (View 2)**

Bronze, iron, 200x80x45 cm



**Untitled**  
Iron, 256x100x50 cm



**The New Testament (View 1)**

Iron, 203x57x60 cm



**The New Testament (View 2)**

Iron, 203x57x60 cm



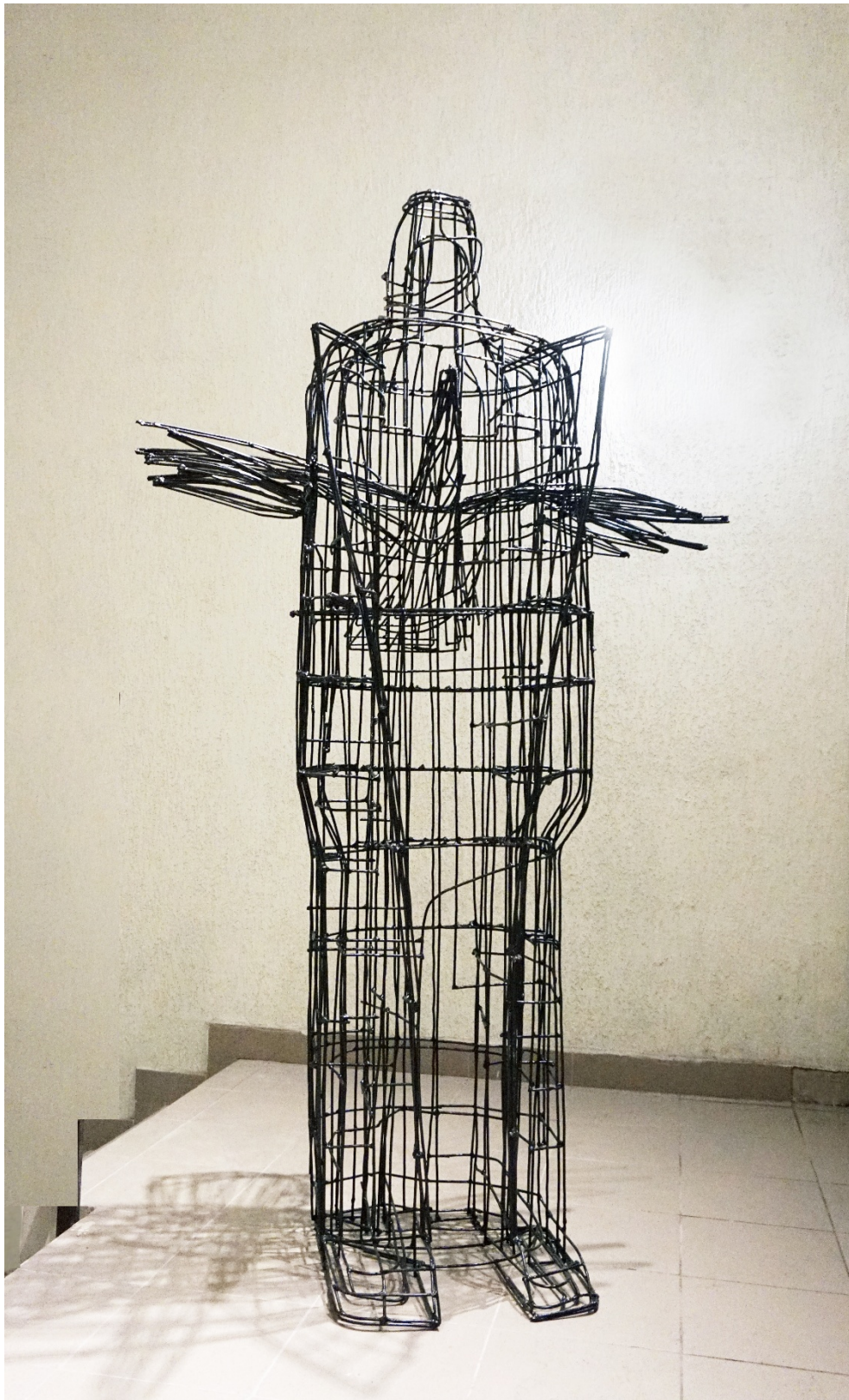
## House of My Soul

Iron, 205x70x70 cm

Protection and limitation — a cross-section of our era.  
A window to the world. A house of my soul.



House of My Soul  
Iron, 205 x 70 x 70 cm



### **Message to the Universe**

Iron, 203x115x74 cm

We send our feelings into the universe as a surge of emotional energy. We open ourselves to the universe, freeing ourselves from our own limitations and boundaries of perception. What our message will be depends on us.



**Wind and Weathering (View 1)**

Bronze, 71x41x20 cm

The sculpture embodies a form shaped through its passage across multidirectional currents of time and force. Its fragmented, diaphanous structure reflects the erosion of memory and the gradual transformation of human presence within time. The journey it evokes is sustained not by certainty of destination, but by the inner forces that make movement possible — hope, inspiration, and the continual unfolding of meaning.



**Wind and Weathering (View 2)**  
Bronze, 71x41x20 cm



**Emanations of the Eagle (View 1)**

bronze, iron, 80 x 28 x 36 cm

This sculpture reflects the boundary between what is and what we are able to perceive. *Emanations of the Eagle* unfolds as a fragmented perception of a vast and elusive presence. The image of the eagle appears in flashes — in partial forms, traces, and tensions that seem to emerge from darkness. What is present here is not the image itself, but what consciousness is able to grasp: a shifting interpenetration of human and avian forms, where structure, gesture, and suggestion coexist in an unresolved state. The work points to a generative force that exceeds perception. The eagle appears as a source of presence, shaping the space of perception around it.



**Emanations of the Eagle (View 2)**  
bronze, iron, 80 x 28 x 36 cm



**Tempus In Perpetuum (View 1)**

Bronze, 80x35x23

The idea of continuity as an inner movement.



**Tempus In Perpetuum (View 2)**  
Bronze, 80x35x23



**Transgressio (View 1)**

Bronze, 83x67x32cm

The idea of uniting the possible and the impossible within a single form.



**Transgressio (View 2)**

Bronze, 83x67x32cm



### **Anamorphosis (View 1)**

Bronze, 60x42x23cm

This work reflects on the necessity of an inner effort to change one's perspective. As long as one remains inside a problem, only the walls of an insurmountable labyrinth are visible. But once one manages to rise above the situation — a difficult and deeply transformative act in itself — another perspective begins to emerge.

The title Anamorphosis refers precisely to this transformation of perspective as a spiritual and existential shift in vision.



**Anamorphosis (View 2)**

Bronze, 60x42x23cm



## Wind

Bronze, 70x21x21cm

This work redefines bronze from a heavy material into a conduit for invisible forces. The Wind is a sculpture of bodiless air, where horizontally structured streams wrap and envelop, creating a dynamic rhythm. The open back reveals the sculpture's true nature: it is not a depiction of a human body, but the wind itself, giving shape to air and materializing the unseen energy of transformation and light.